



1. Put paper down. Paper should be a wider width than the copper piste (approximately 1-1/2 paper rolls wide).



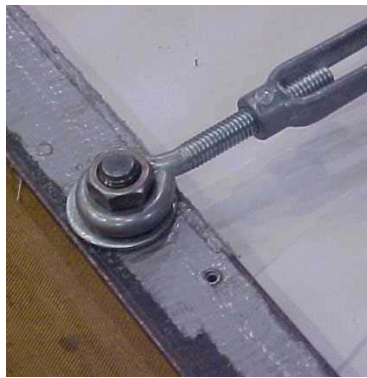
2. Unroll the copper pipe, making sure it is straight.



3. Insert bolt.



4. Attach turnbuckle as shown above. Be sure turnbuckle is fully extended.



5. Attach plate.



6. Tear away paper.



7. Apply tension. Tape the plate securely to the floor. Tighten turnbuckles.



8. Tear paper away from edges of copper.



9. Attach box wire to copper. Tape edges securely.

Electronic Boxes



1. Attach wires as shown above.



2. Tape loose wires to table and floor to avoid tripping.



3. Each table should have a set of weights (500 gr and 750 gr) and epee feeler gauge. Each piste should have a number.



4. Place bungie reel plates in position.



5. Apply tension.



6. Tape plate.



7. Set up mask check.
Include mask check device and stamp/pad.